

TradeEx

PARTNER COMPENSATION PLAN

C.S. DOUGLAS

TradeEx Partner Compensation Plan

 **by Chris Douglas**



TradeEx MLM: Your Pathway to Lasting Prosperity

TradeEx MLM offers an extraordinary opportunity for individuals seeking meaningful, permanent, and financially rewarding careers. Our meticulously structured rewards program incentivizes genuine performance, leadership, and dedication, enabling participants to achieve substantial financial independence while contributing to the growth and success of the entire TradeEx community.

By joining TradeEx, you gain access to lucrative commissions through direct sales and downline performance and unlock generous milestone bonuses that reflect your hard work, leadership, and sales achievements. In addition to commissions, our rewards program ensures fairness, sustainability, and extraordinary incentives designed to motivate and reward genuine contributions without additional personal investment requirements.

Whether your ambition is financial security, personal growth, or a luxurious lifestyle, TradeEx provides the tools, support, and rewards to turn your goals into reality. Embrace this exceptional opportunity today and begin building a career with benefits far beyond traditional income creating lasting prosperity and a powerful legacy.

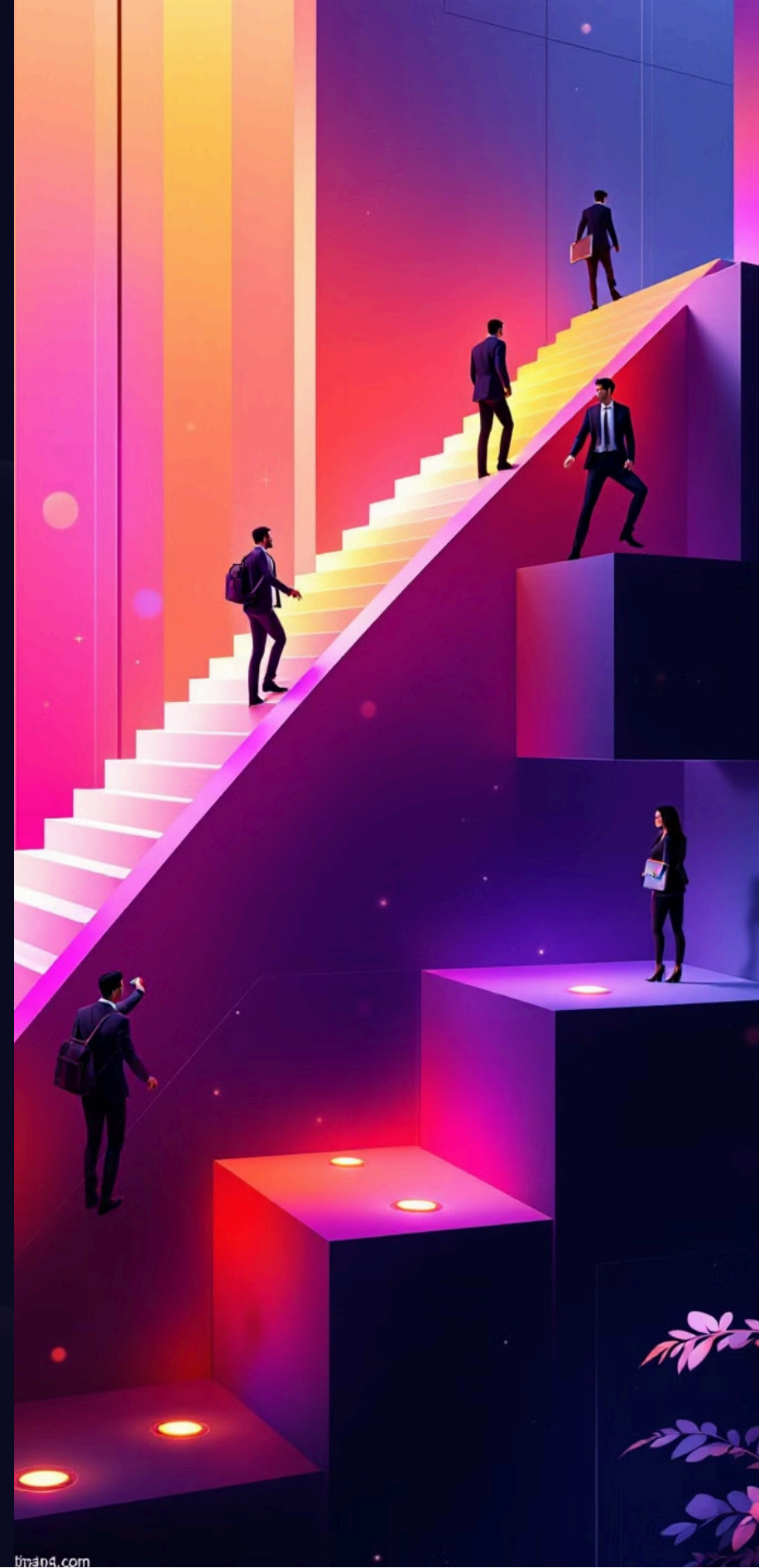


Executive Summary

The TradeEx Partner Compensation Plan is specifically crafted to deliver exceptional rewards to partners based on tangible performance in direct sales and downline network growth. This innovative and flexible compensation structure features clearly defined tiers and levels, generous commissions, and scalable bonuses designed to recognize and reward genuine results. Partners advance through the ranks by expanding their networks and increasing sales, unlocking progressively more significant financial and lifestyle benefits. TradeEx's commitment to fairness and sustainability ensures lasting success, empowering each partner to build a lucrative, enduring career.

Levels, Ranks & Tiers Overview

Level	Title	Rank Status	Investment Range
1	Affiliate	Entry	\$50
2	Rising Star	Agent	\$100
3	Bronze Partner	Pro Agent	\$500
4	Silver Partner	Manager	\$1,000
5	Gold Partner	Director	\$5,000
6	Platinum Partner	Marketing Strategist	\$15,000
7	Diamond Partner	Senior Pro Strategist	\$25,000
8	Elite Partner	High Master	\$50,000+



Tier-Level Commission Structure

Level	Investment Range	L1	L2	L3	L4	L5	L6	L7	L8
1	\$50	10%	5%	2%	1%	1%	1%	1%	1%
2	\$200	12%	6%	3%	2%	1%	1%	1%	1%
3	\$500	15%	7%	3.5%	2.5%	1.5%	1%	1%	1%
4	\$1,000	18%	8%	4%	3%	2%	1%	1%	1%
5	\$5,000	20%	10%	5%	3.5%	2.5%	1.5%	1%	1%
6	\$15,000	22%	11%	5.5%	4%	3%	2%	1.5%	1%
7	\$25,000	24%	12%	6%	4.5%	3.5%	2.5%	2%	1.5%
8	\$50,000+	28%	15%	7.5%	6%	5%	4%	3.5%	3%



Direct Sales Earnings

Token vs. Coin Direct Sales Comparison

(minimum costs shown)

Token Listing: \$10,000

Coin Listing: \$115,000

Market Making: \$18,000 (both)

Marketing Package: \$35,000 (both)

Total Cost (Token): \$63,000

Total Cost (Coin): \$168,000

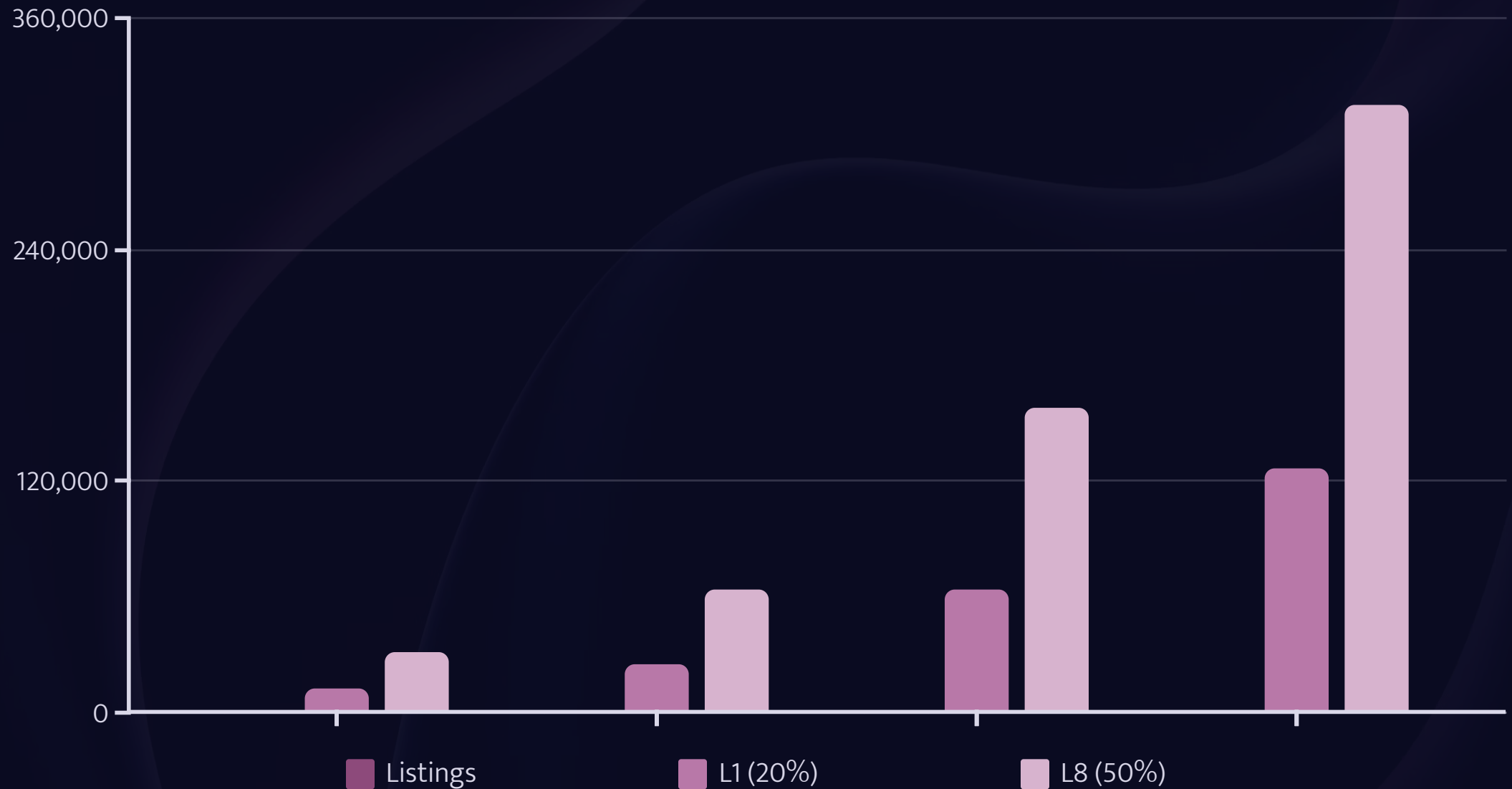
Direct Commission Comparison Table

Level	Tier	Commission %	Token Earnings (\$63,000 Sale)	Coin Earnings (\$168,000 Sale)
1	1	20%	\$12,600	\$33,600
2	2	24%	\$15,120	\$40,320
3	3	30%	\$18,900	\$50,400
4	4	36%	\$22,680	\$60,480
5	5	40%	\$25,200	\$67,200
6	6	44%	\$27,720	\$73,920
7	7	48%	\$30,240	\$80,640
8	8	50%	\$31,500	\$84,000

Notes:

- Token Earnings calculations are based on a package totaling \$63,000.
- Coin Earnings calculations are based on a higher-value package totaling \$168,000 (reflecting the minimum coin listing cost of \$115,000).
- Earnings significantly increase with coin listings due to their higher initial investment.

Scaling Earnings Scenarios



This chart shows earnings for multiple full package TOKEN sales (\$63,000 each) comparing Level 1 (20% commission) and Level 8 (50% commission). As the number of listings increases from 1 to 10, earnings scale proportionally, with Level 8 partners earning significantly more per sale.

Earnings for Multiple Full Package Sales (Coin)

\$84,000 **\$420,0...**

Single Coin Sale (L8)

50% commission on one \$168,000
package

Five Coin Sales (L8)

50% commission on five \$168,000
packages

\$840,0...

Ten Coin Sales (L8)

50% commission on ten \$168,000
packages

The table demonstrates the exceptional earning potential for partners at Level 8 (50% commission) when selling multiple COIN packages at \$168,000 each. As sales volume increases, earnings scale dramatically, with ten sales generating \$840,000 in commissions.



Enhanced TradeEx MLM Rewards Program



The TradeEx rewards program is designed to fairly and sustainably reward Partners based on actual sales performance and recruitment efforts. Bonuses are strictly conditional upon meeting clearly defined sales and investment milestones to ensure rewards reflect actual performance and maintain the financial stability of the MLM structure.

\$2,500 REWARD

- Annual Sales Achievement: \$100,000
- Direct Active Members: 5

HOVER OVER TEXT:

Achieve \$100,000 in annual sales from your entire direct and indirect network, with at least 5 active direct members. Receive a \$2,500 cash bonus.

TradeEx Milestone Rewards

\$7,500 REWARD

- Annual Sales Achievement: \$250,000
- Direct Active Members: 10

HOVER OVER TEXT: Reach \$250,000 in annual sales across your team, including indirect recruits, and maintain at least 10 active direct members. Earn a \$7,500 cash bonus.

\$15,000 REWARD

- Annual Sales Achievement: \$500,000
- Direct Active Members: 20

HOVER OVER TEXT: Secure \$500,000 in total annual team sales, maintaining at least 20 direct active members. Qualify for a \$15,000 cash bonus.

Higher Rewards

Continue advancing to unlock even greater rewards at higher achievement levels.





Advanced Milestone Rewards



\$40,000 REWARD

Annual Sales Achievement: \$1,000,000

Direct Active Members: 30

HOVER OVER TEXT: Hit the milestone of \$1,000,000 in total annual sales from your entire network, with a minimum of 30 direct active members. Receive a \$40,000 cash bonus.



\$75,000 REWARD or Luxury Watch

Annual Sales Achievement: \$2,500,000

Direct Active Members: 50

HOVER OVER TEXT: Achieve annual team sales totaling \$2,500,000 and maintain 50 active direct members. Earn a \$75,000 cash bonus or choose a luxury watch as your reward.



Elite Milestone Rewards



\$150,000 REWARD or Luxury Car

Annual Sales Achievement: \$5,000,000

Direct Active Members: 75

HOVER OVER TEXT: Attain \$5,000,000 in annual network-wide sales with at least 75 direct active members. Qualify for a substantial \$150,000 cash bonus or select a luxury car as your reward.



\$250,000 REWARD or Luxury Vehicle

Annual Sales Achievement: \$10,000,000+

Direct Active Members: 100

HOVER OVER TEXT: Reach a remarkable \$10,000,000 or more in annual sales with 100 direct active members. Receive an exceptional \$250,000 cash bonus or choose an exclusive luxury vehicle.

Ultimate Milestone Rewards

\$500,000 REWARD or Premium Real Estate

- Annual Sales Achievement: \$25,000,000+
- Direct Active Members: 150

HOVER OVER TEXT: Achieve outstanding annual sales of \$25,000,000 or more across your entire network, with at least 150 active direct members. Receive a prestigious \$500,000 cash bonus or premium real estate property.

\$1,000,000 REWARD or Exclusive Luxury Estate

- Annual Sales Achievement: \$50,000,000+
- Direct Active Members: 200

HOVER OVER TEXT: Reach an extraordinary milestone of \$50,000,000 or more in annual team sales, maintaining at least 200 active direct members. Receive an extraordinary \$1,000,000 cash bonus or select an exclusive luxury estate.



Important Reward Conditions

Performance-Based Rewards

Bonuses are awarded strictly upon reaching the defined annual sales and direct member targets.

Clear Thresholds

No rewards will be given unless the sales and active member thresholds are clearly met.

Sustainable Structure

This structure ensures fairness, motivation, and sustainability, rewarding genuine performance and dedication without requiring additional self-investment.

Downline Commissions



Commission Flow

Partners earn from their direct recruits (Tier 1) and extend earnings across eight cascading tiers.



Direct Sales

Your direct sales yield entire commission percentages.



Downline Sales

Downline sales distribute progressively reduced rates based on your level and their tier position.



Example Scenario: Level 5, Tier 5

Five recruits each generate \$10,000 in sales.

You earn 10% direct = \$5,000

Additional cascading earnings accumulate through their networks.



Additional Information

Independent Contractor Status

Agents are 1099 independent contractors, not W-2 employees. Their earnings are solely based on sales performance.

Network Growth

Building a strong downline multiplies earning opportunities across multiple tiers.



Performance-Based

All earnings are directly tied to actual sales results and network growth.

Scalable Income

Earnings potential increases with advancement through the tier structure.

Enrollment and Annual Fee Structure



Enrollment Fee

One-time fee of \$199



NAP Agreement

Complete New Affiliate Partners Agreement



Benefits

Access to exclusive resources and support

All New Affiliate Partners (NAPs) must complete the **New Affiliate Partners Agreement** (NAP Agreement) and pay a **one-time enrollment fee of \$199**. This fee includes:

- Administrative processing and account setup.
- Access exclusive educational materials tailored to selling Crypto Stock Exchange (CSE) listings and services.
- Discount resources, marketing guides, and tools to support success as a TradeEx Partner.
- Ongoing support services from the Affiliate Management Team.
- Periodical adverts on media and broadcasts.

By investing in the enrollment fee, NAPs can maximize your earning potential while confidently representing TradeEx.

Annual Partner Fee



An annual fee sustains and enhances the resources available to affiliate partners. This fee provides uninterrupted access to TradeEx tools, systems, and 24/7 support services, ensuring continued success for all levels.

The annual fee structure is based on the Partner's position:

- **Levels 1-4:** \$99 annually
- **Levels 5-8:** \$189 annually

An illustration of a modern office environment with a warm, orange-toned lighting. In the foreground, a man with a beard and glasses is seated at a desk, looking at a large monitor displaying various data charts and graphs. To his right, another person is partially visible, also working. In the background, a woman stands near another desk, looking at a large wall-mounted display that shows multiple data dashboards. The overall scene conveys a professional, data-driven workspace.

Annual Fee Benefits



Exclusive Tools

Exclusive tools and analytics systems for tracking sales performance.



Priority Access

Priority access to updates, new materials, and promotional resources.



Advanced Dashboards

Advanced customer and affiliate management dashboards, top media exposure.



Networking Events

Invitations to partner-only webinars, workshops, and networking events.

Affiliates who achieve high-performance milestones may qualify for **fee discounts or waivers**, further incentivizing results-driven engagement.